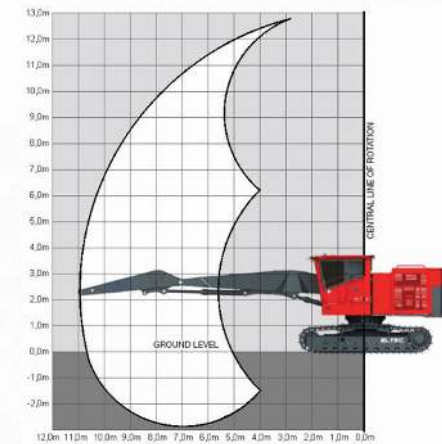


FH417B SERIES



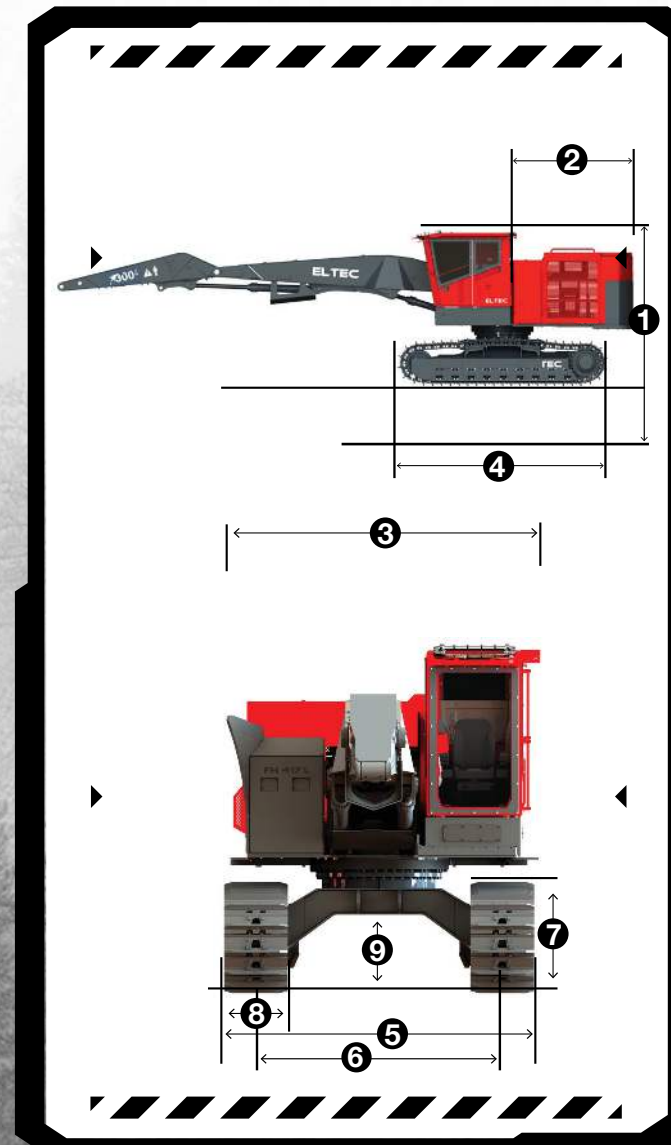
ELTEC
FH417B SERIES
FELLER HARVESTOR

POWERFUL
RELIABLE
BUILT FOR FORESTRY

CONSISTENT
MULTIFUNCTIONAL
PERFORMANCE WITHOUT
SACRIFICING POWER

ADDITIONAL COUNTER-WEIGHT
OPTIONS AVAILABLE
FOR YOUR SPECIFIC NEEDS

ELTEC
FH417B SERIES
FELLER HARVESTOR



REFILL CAPACITIES	FH417B
Diesel Reservoir	1 117L / 299 USgal
Hydraulic Reservoir	351L / 92 USgal
Auxiliar hydraulic reservoir	53L / 15 USgal
DEF Reservoir	111L / 29.5 USgal

MACHINE DIMENSIONS	FH417B
1 Overall Height	3429mm / 8'-3"
2 Tail Swing (From Swing Center)	3606mm / 11'-10"
3 Upper Structure Overall Width	3314mm / 10'-10"
4 Overall Track Length	5194mm / 17'-1"
5 Overall Track Width	3454mm / 11'-4"
6 Track Gauge	2743mm / 9'-0"
7 Track Height	1220mm / 4'-0"
8 Track Width	711mm / 2'-4"
9 Minimum Ground Clearance	870mm / 2'-10"
Machine weight**	39644kg / 87400lbs
Ground Pressure Single Grouser (711mm / 2'-4")	(66,0kPa/9,6 psi)

BOOM SYSTEM PERFORMANCE	FH417B
Standard Cylinders	145mm/ 5,7" (boom); 160mm/ 6,3" (stick)
FH34 - Boom Length (min/max)	5,2m (17')/ 10,0m (32'11")
FH34 - Bare Pin Lifting Capacity (standard cylinder)	6,1m (20') = 13680 kg (30100 lb)
	7,6m (25') = 10910 kg (24000 lb)
	9,1m (30') = 8590 kg (18900 lb)
Full reach	6360 kg (14000 lb)

**basic, without skylight and accessories

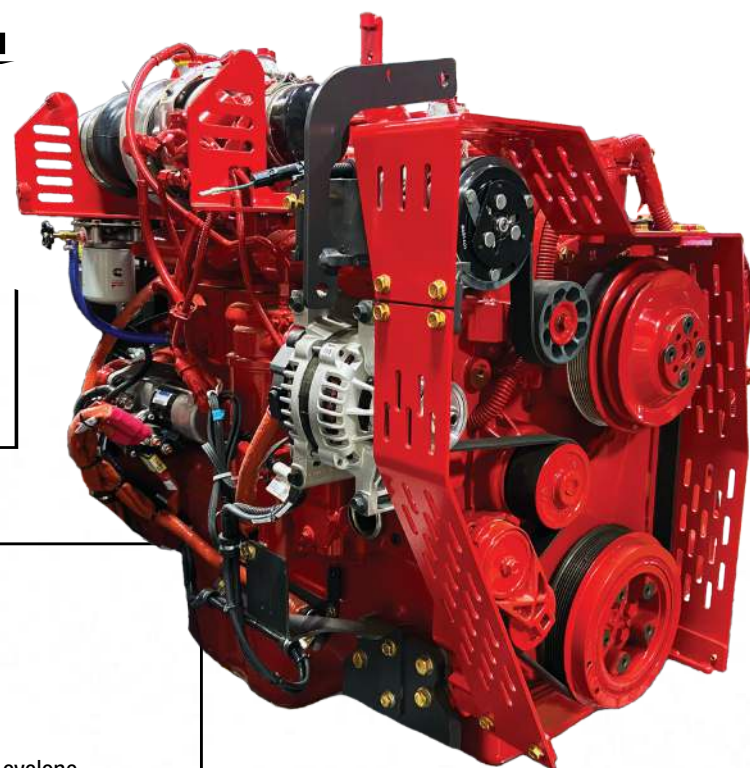
ELTEC

FH417B SERIES

FELLER HARVESTOR

BASE UNIT

- Fire suppression system
- 24 V system, 2 x 1150 amp batteries, 110 amp alternator
- 3 LED worklights on cab, 2 x on hood and 1 x inside engine compartment
- Reinforced cooling system
- Climate controlled cabin



DIESEL ENGINE CUMMINS L9

- 261kW (350CV) 1800 RPM
- In-line 6, turbo w/wastegate
- 8.9L (543 cu. in.)
- Tier 4 Final, NA (Stage 5, EU)
- Cummins filtration box with integrated pre-cleaning cyclone.

ACCESSIBILITY

Through the hood, access to the diesel engine from two sides. Once opened, the hood turns into a platform for component service. All filtration systems are accessible for cartridge replacement. Easy access to batteries when needed.

ELECTRICAL SYSTEM

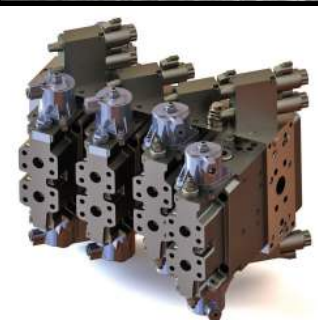
Voltage	24V
Alternator	110amp
Batteries	2 x 1150amp
Lighting	LED
Travel Alarm	YES

COOLING SYSTEM

Aluminum side-by-side radiators, oil, water and air cooler, hydraulically driven fan, variable speed, reversible rotation.

HYDRAULIC SYSTEM

The main block is the central point of all hydraulic functions for the machine. The new Linde block offers an integrated system of the 8 main valves as well as the solenoid valves. This new block directly controls the pressure and also allows the reduction of connections and hoses. The integration of this new block allowed reconfiguration of the positioning; the block is now positioned higher which increases the space between the block and rotation unit.



UPPER STRUCTURE

Type of rotational system - Single swing unit, 2 stage planetary reduction	Single rotation unit, 2 stage reduction to planetary (5% torque increase vs A series)
Swing Drive Speed	6.5 RPM
Swing Drive Bearing diameter	1339mm / 4'-5", Internal gears in grease bath

CABIN

Cabin	ROPS – FOPS – OPS certified, 3 emergency exits, mounted on 8 anti-vibration pads significantly reducing vibrations
Vision	Best in class for peripheral vision, front window in full length polycarbonate, 32mm / 1.25" thick
Console	2 complete consoles to the right of the operator
Control System	Electronic steering system. Load management and response of the main and attachment pumps configurable from the machine interface, calibration possible to meet the specific use of the machine. Each function is configurable by the operator and multiple operators can be stored in memory, ability to duplicate the operator. New electronic management of oil sharing between functions or between attachments, firmness of rotation, aggressiveness of the machine, all configurable by operator. Interface for improved diagnostics with display of hydraulic pressures in real time.
Screen Interface	Robust screen, waterproof navigation buttons, user-friendly interface
Control Sticks	Electric, seat armrest mounted
Climate Control	Complete, several adjustable louvers at strategic locations for operator comfort
Seat	Size options, air suspension, multiple adjustments, heated
Multi-media receiver	Multilingual, AM/FM, bluetooth, iphone compatible, integrated alexa, USB port, Sirius (subscription not included)



HYDRAULIC SYSTEM

	FH417B
Main pump 1, piston type, Load sensing, Electronic load control	370L/min (98 gpm US)
Main pump 2, piston type Load sensing, Slave hydraulic load control	175L/min (46 gpm US)
Attachment pump, piston type, Electronically flow and pressure controlled	370L/min (98gpm US) OPTION up to 440lpm (116gpm US) by sharing main pump
Oil filter	1 main return filter, return with bypass, 1 sump drain filter, suction strainer
Main hydraulic block	Linde
FRSTM - Flow Recovery System	Flow recovery system assisted by kinetic energy, allowing faster in and out cycles of the arrow and material while using less flow, enabling better distribution of fluid to the rest of the functions. Exclusive system for the new Eltec series.

UNDERCARRIAGE CHASSIS

Size	D7
Track Chain	216mm / 8.5"
Number of Track Links (per side)	50
Lower Rollers (per side)	9
Carrier Slides/Rollers (per side)	1
High Travel Speed - Forward/Reverse	3,6 km/hr - 2,2 mph
Low Travel Speed - Forward/Reverse	1,7 km/hr - 1 mph
Tractive Effort Normal	445 kN/100000 lbf

ELTEC BY LOGGERS FOR LOGGERS ELTEC BY LOGGERS FOR LOGGERS ELTEC BY LOGGERS FOR LOGGERS