

FELLER-HARVESTER 410L



ELTEC
BY LOGGERS FOR LOGGERS



ENTIRELY MANUFACTURED IN CANADA

ELTEC Feller-Harvesters have been designed to simplify the daily foresters' work. Combining advanced technical features, **ELTEC** Feller-Harvesters offer a comfortable working environment, which allows moving to another level of performance in the forestry.

EXTREMELY ROBUST DESIGN

Adapted design and premium materials help **ELTEC** Feller-Harvesters lift heavy loads and withstand different impacts. Better stability is ensured by the chassis-carrier with a very long wheelbase.

PERFORMING COOLING SYSTEM

- High capacity coolers suitable for extreme conditions
- Variable speed and reversible fan
- Specially designed grate which prevents debris from entering the cooler
- Rear coolers which ensure cleaner air aspiration



ACCESIBILITY FOR THE SERVICE

The spacious engine compartment with steel catwalks is designed to simplify service and maintenance. Once opened, the hood is transformed into a platform for component service. The filtration system is accessible for cartridge replacement. Excellent access to batteries is available as well.

CONTROL DEVICES

- Joystick and electronic pedals for operation functions
- Keyboard (2) with power and service functions
- Color screen with full machine interface
- Electronic controls with all programmable functions



SPACIOUS CAB

All **ELTEC** Feller-Harvesters have a sound-proof and insulated cab equipped with a pneumatic suspension heated seat with multiple adjustments. The front full-height 32mm (1.25") polycarbonate window provides a peerless overview. To ensure superior comfort, **ELTEC** Feller-Harvesters feature a high-capacity, integrated HVAC system with multiple adjustable airflows. The radio with a CD player and USB port are also available.



With all these specifications the **ELTEC** Feller-Harvesters will exceed the most demanding expectations of professional foresters.

SPECIFICATIONS

POWER	
Cummins QSL9 T4 diesel engine	239 kw (320hp) @ 2 100 rpm
Cummins QSL9 T3 diesel engine*	239 kw (320hp) @ 2 100 rpm

CAPACITY	
Fuel Tank	1 491 L / 394 gal US
Hydraulic Tank	284 L / 75 gal US

TRACTION DRIVE	
Torque	135 582 Nm / 100 000 lb/ft

MOVEMENT SPEED	
Low	2,2 km/hr / 1,4 mph
Medium	3,0 km/hr / 1,86 mph
High	4,2 km/hr / 2,5 mph

ELECTRICAL SYSTEM	
Voltage	24 V
Alternator	110 amp
Batteries	2 x 1 150 amp
Motion alarm	
Lightning	LED

COOLING SYSTEM	
Type	Side by side heavy-duty
Fan	Adjustable reverse cycle, 1 143 mm / 45"

CHASSIS CARRIER	
Chain	D7 - 216 mm / 8,5"
Track	710 mm / 28"
Undercarriage	D7 Tractor type (9)

SWING DRIVE	
Large capacity swing bearing	1 550 mm / Ø61"
Continuous rotation	8 rpm
Torque	115 243 Nm / 85 000 lb/ft

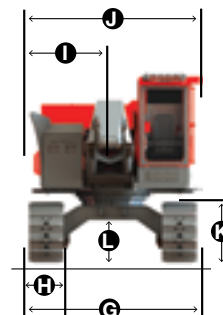
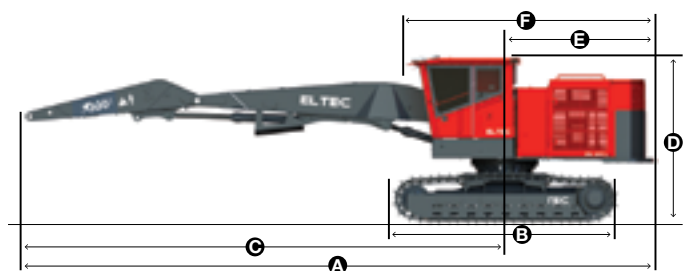
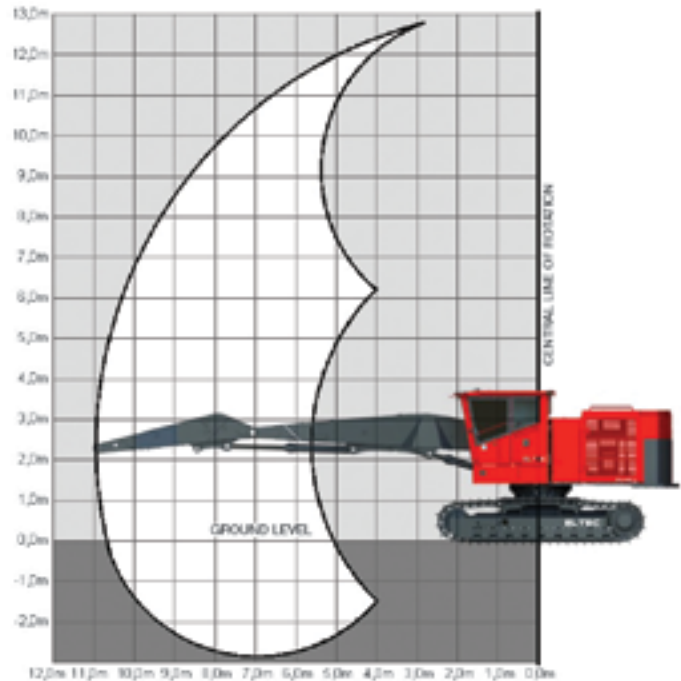
MEASURES		
A	Overall Length	14 488 mm / 47'6"
B	Overall Track Length	5 207mm / 17'1"
C	Bare Pin	11 074 mm / 36'4"
D	Overall Height	3 875 mm / 12'9"
E	Tail Swing (From Swing Center)	3 440 mm / 11'8"
F	Upper Structure Overall Length	5 696 mm / 18'11"
G	Traction Overall Width	3 472 mm / 11'4"
H	Track Width	710 mm / 2'4"
I	Tail Swing (From Swing Center)	1 473 mm / 4'10"
J	Upper Structure Overall Width	3 175 mm / 10'5"
K	Track Height	1 220 mm / 4'0"
L	Minimum Ground Clearance	864 mm / 2'10"
	Weight**	39 644 kg / 87 400 lbs

* export only

**Basic without accessories

BOOM SYSTEM		
FH34	Minimum Reach	5 182 mm / 17'0"
	Maximum Reach	10 033 mm / 32'11"

LIFTING CAPACITY AT BARE PIN	
FH34	6 363 kg / 14 000 lbs





ELTEC

BY LOGGERS FOR LOGGERS



Technologies Élément PSW Inc

1117, rue des Manufacturiers

Val-d'Or (Québec) Canada J9P 6Y7

T. 819 825-1117 F. 819 825-7777

technologieselement.com